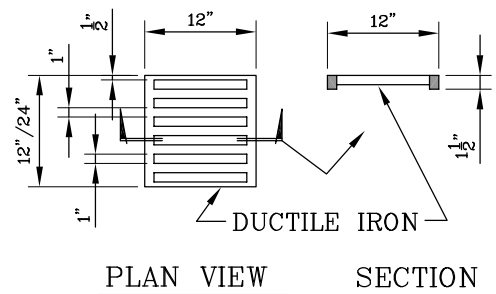
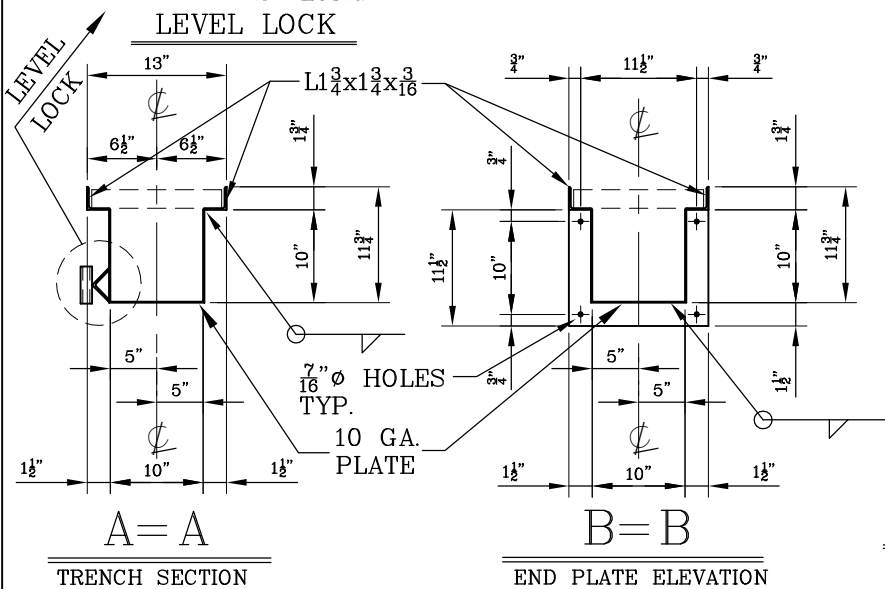


TYPICAL TRENCH DRAIN



TYPICAL TRENCH GRATE
(5 TOTAL FOR EACH TRENCH)



Gibson Steel Basins
SINCE 1972

10" WIDE x 10" DEEP

10 FOOT LONG FLAT TRENCH DRAIN

PROJ. MAN. DOUG P.

DWN. PAUL G.

SCALE NONE

DATE: JAN. 23, 06

MODEL: GTD-1010

DWG #

TD10